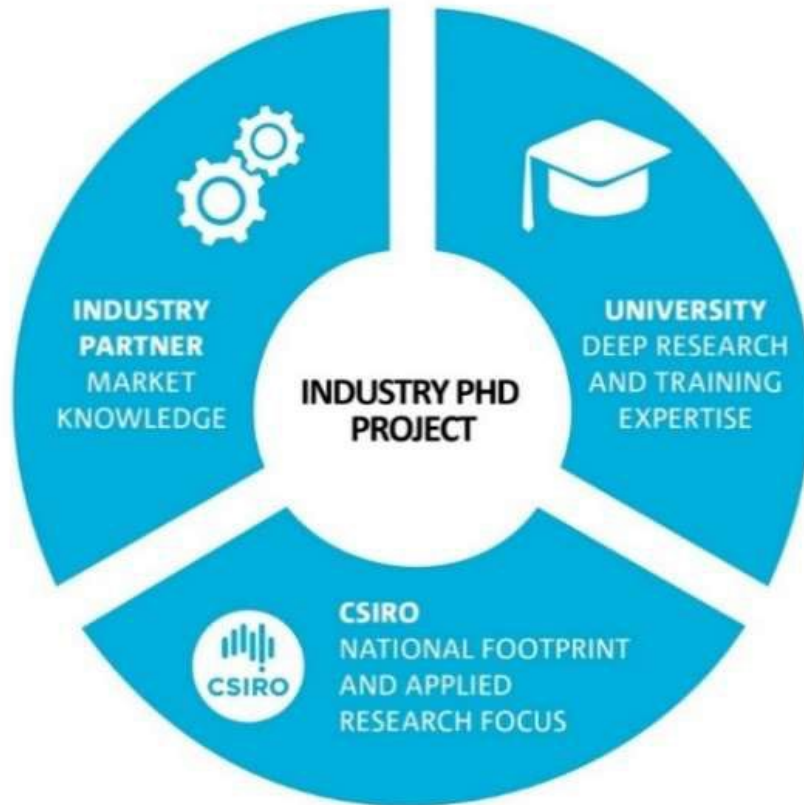


Industry PhD (iPhD) program

Information for university researchers



iPhD Program overview



Bringing together an **industry partner**, a **university** and **CSIRO** to co-develop a four-year PhD project.

Supporting a **three-way partnership** aiming to **train new researchers** in critical areas and develop new or strengthen relationships between research organisations and industry.

Timeline



iPhD project development

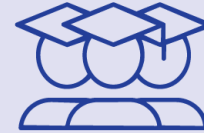
Primary EOI round: Early Feb
(approx. 35 projects)

Secondary EOI round: Mid-April
(approx. 15 projects)



Collaboration agreement

A contract is executed three months
after application approval



Student recruitment

The project is advertised, and a
student is selected, enrolled and
onboarded



iPhD commencement

Student supervision is shared between
university, industry and CSIRO partners



February



February

Students are unable to submit EOI and all projects will be
openly advertised via the participating university.

iPhD Program key features



PhD projects are co-developed and co-supervised by university, CSIRO and industry partners



A three-month industry engagement component is embedded within the PhD



Students receive a funded government scholarship, an industry top-up and funds for project operating expenses



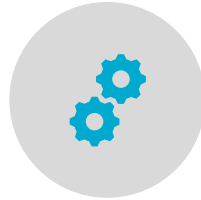
Student career and professional development training is delivered alongside the PhD



iPhD Program benefits for universities



Supports strategic partnerships with industry and CSIRO partners



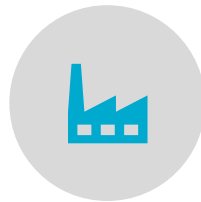
Funded by Government, not from university



Provides PhD students with industry focused training



Enhances innovation and potential to commercialise research



Intends to meet Government requirements of an eligible industry internship



Assists PhD students to develop industry-focused and professional skills



iPhD Program funding and support

The CSIRO iPhD Program is funded by the Australian Government and the industry partner for up to four years.

Year	CSIRO Industry PhD Scholarship	Industry top-up	Total scholarship	Project Expense and Development package
2026	\$36,071	\$12,000	\$48,071	\$13,000
2027	\$37,153	\$12,360	\$49,513	\$13,390
2028	\$38,267	\$12,731	\$50,998	\$13,792
2029	\$39,415	\$13,113	\$52,528	\$14,205



iPhD Program specifics

Project eligibility

- Align with CSIRO & Government priorities
- Address an industry problem
- Comply with the university's rules for a PhD

Student eligibility

- Australian or New Zealand citizen or Australian Permanent Residents only
- Meet university PhD admission requirements

Industry eligibility

- Australian company or have a significant Australian presence

iPhD Program specifics

Industry provisions

- A co-supervisor to support the student
- Approx. \$12,000 per annum for up to four years
- A 60-day Industry Engagement component
- Access to facilities and infrastructure if required

University provisions

- A primary supervisor to assess the student in line with HDR policies
- Lead student advertising, recruitment and enrolment
- A fee off-set to the student
- Access to facilities and infrastructure if required

CSIRO provisions

- A co-supervisor to support the student
- Access to facilities and infrastructure if required



Next Steps

- Identify a potential project idea and partners
- Discuss with your CSIRO connection to obtain CSIRO support
- Engage partners to complete EOI form
- Submit EOI form



Expression of Interest Industry PhD Program

The purpose of this Expression of Interest (EOI) form is to collect the information required to assess a project for inclusion in the [CSIRO Industry PhD Program](#), and if successful, to draft a Collaboration Agreement to allow the project to be undertaken. It does not commit any of the signatories or their organisation to progress with the project as this will be done through the Collaboration Agreement.

This form must be submitted by the primary contact on behalf of all involved parties to iphd@csiro.au. It is important that all parties agree on every section of the form and have provided their consent for EOI submission. We recommend completing this form collaboratively.

The CSIRO supervisor must seek support from their Research Program Director, the university supervisor must seek support from their Graduate Research School (or equivalent), and the industry partner must seek support of their approved delegate. Email evidence of support from each partner must be attached to the completed EOI form and sent to iphd@csiro.au by the primary contact.

All parties should review the program rules provided before completing this form. For further assistance, contact the [iPhD Program Office](#).

Contents

1. Supervisor Contact Details, Approvals and Consent	2
University	2
CSIRO	2
Industry	3
2. Project Details for Advertising	4
3. Project Selection Criteria	6
4. Intellectual Property (IP)	9
Appendix 1: Privacy Statement for Expression of Interest Application	10

Thank you

CSIRO Industry PhD Program

iphd@csiro.au

csiro.au/iphd



Sign up to e-news



Visit the website

